



REPUBLIKA SLOVENIJA
MINISTRSTVO ZA KMETIJSTVO,
GOZDARSTVO IN PREHRANO

LEADER/CLLD implementation in EU and non EU countries - SLOVENIA CASE

Alina Cunk Perklič

Head of CLLD Coordination Committee

Razlog, Bulgaria, October 2019



CLLD
LEADER

CONTENT

1. **HISTORY of LEADER approach**

- CRPOV PROGRAMMES: 1991-1996
- Regional rural development programmes: 1996 – 2003
- SAPARD (pre accession): no LEADER measure
- Rural Development Programme 2007 -2014: LEADER

2. **LEADER/CLLD 2014-2020**

3. **CHALLENGES FOR 2021-2027**



INTEGRATED RURAL DEVELOPMENT AND VILLAGE RENEWAL PROGRAMMES 1991-1996

- Introduced in 1991 as a systematic approach for solving new, focused rural development questions in villages and small communities
- Programmes have laid foundations for modern methodological approach – approach based on the initiative of the local community with the desire to activate development potentials in the specific area



Results: 270 projects
implemented



REGIONAL RURAL PROGRAMMES

1996-2000

The CRPOV Programme have shown that there is a **need of formal and effective cooperation and networking** between those who offer support and funding and those who actually carry out development projects → municipalities got acquainted with the knowledge of project preparation, finance planning and implementation

In 1996 CRPOV Programme upgraded → Regional Rural Programmes (as LEADER bottom-up initiative)

-> **combination of development goals of at least three municipalities**



RESULTS 1991-2003

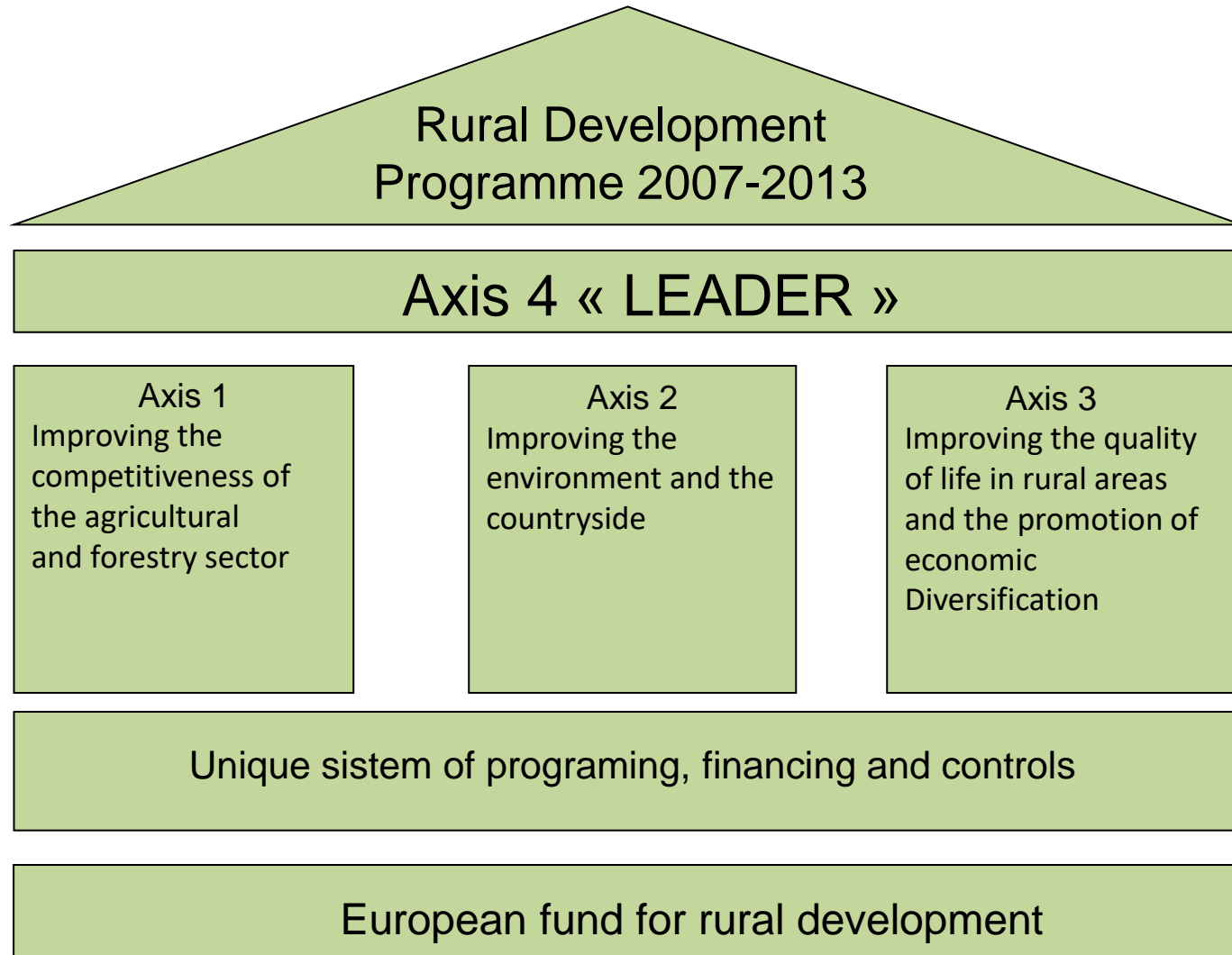
Two types of projects:

- **CRPOV projects** for the area of village, settlement, and part of the municipality. Since 1991 till 2003 app. 300 projects in different phases of implementation.

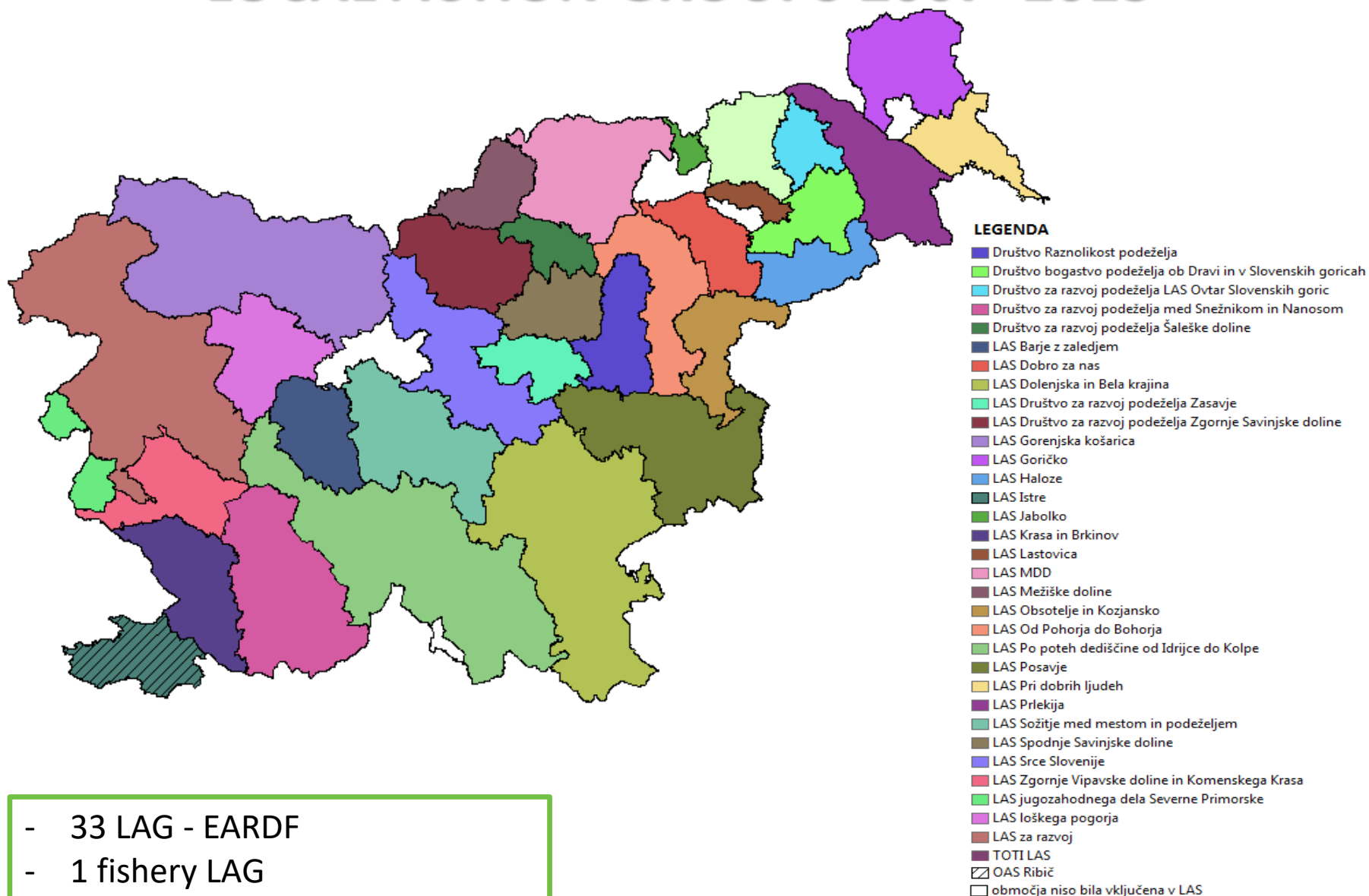
- Regional Rural Programmes - **projects for the area covering at least three municipalities.** Since 1996 till 2003 19 projects in 118 municipalities, 20 projects of Wine roads of Slovenia in 76 municipalities



LEADER 2007 - 2013



LOCAL ACTION GROUPS 2007–2013



- 33 LAG - EARDF
- 1 fishery LAG
- 97 % territory of RS
- 94 % rural inhabitants

Sustainable development of fisheries areas under the European Fisheries Fund

- FLAG Ribič, selected by tender together with LDS
- The whole coastal zone is treated as one area (homogeneity, critical mass, fisheries sector...); the municipalities of Koper, Izola and Piran are included.
- Approved 2.8 mio EUR, paid 2.7 mio EUR.
- **20 successfully completed projects**
- **Project goals:** diversification, adding value to fishery products, education, linking fisheries with tourism, natural and cultural heritage.



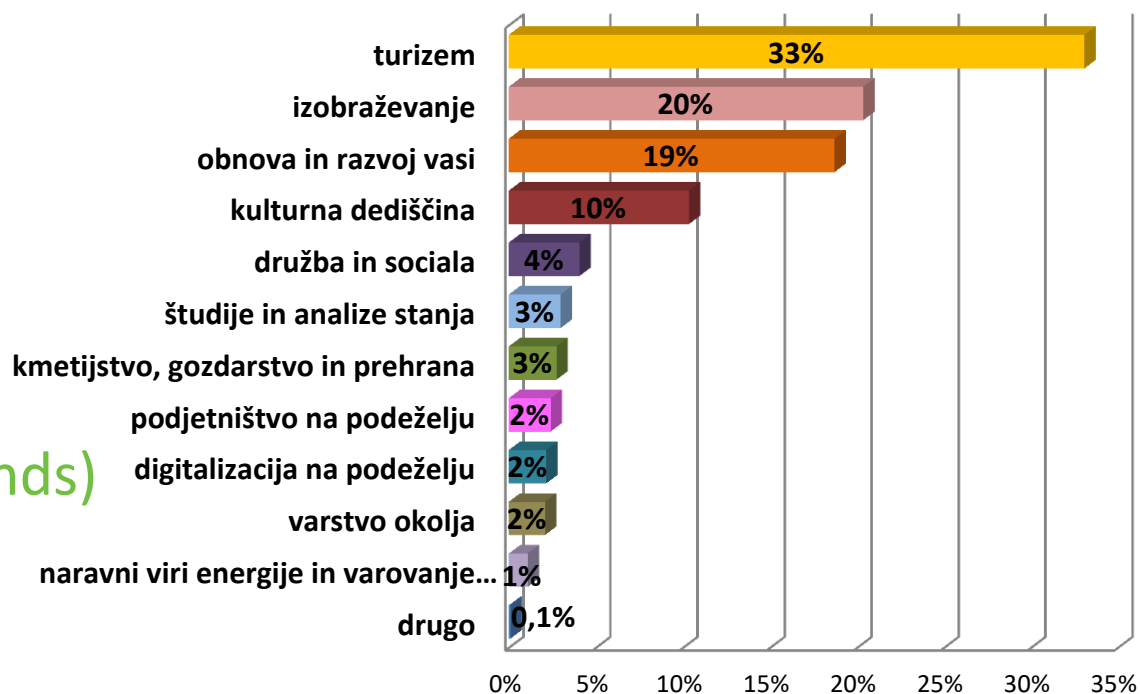
LEADER 2007-2013 RESULTS

EAFRD sum:

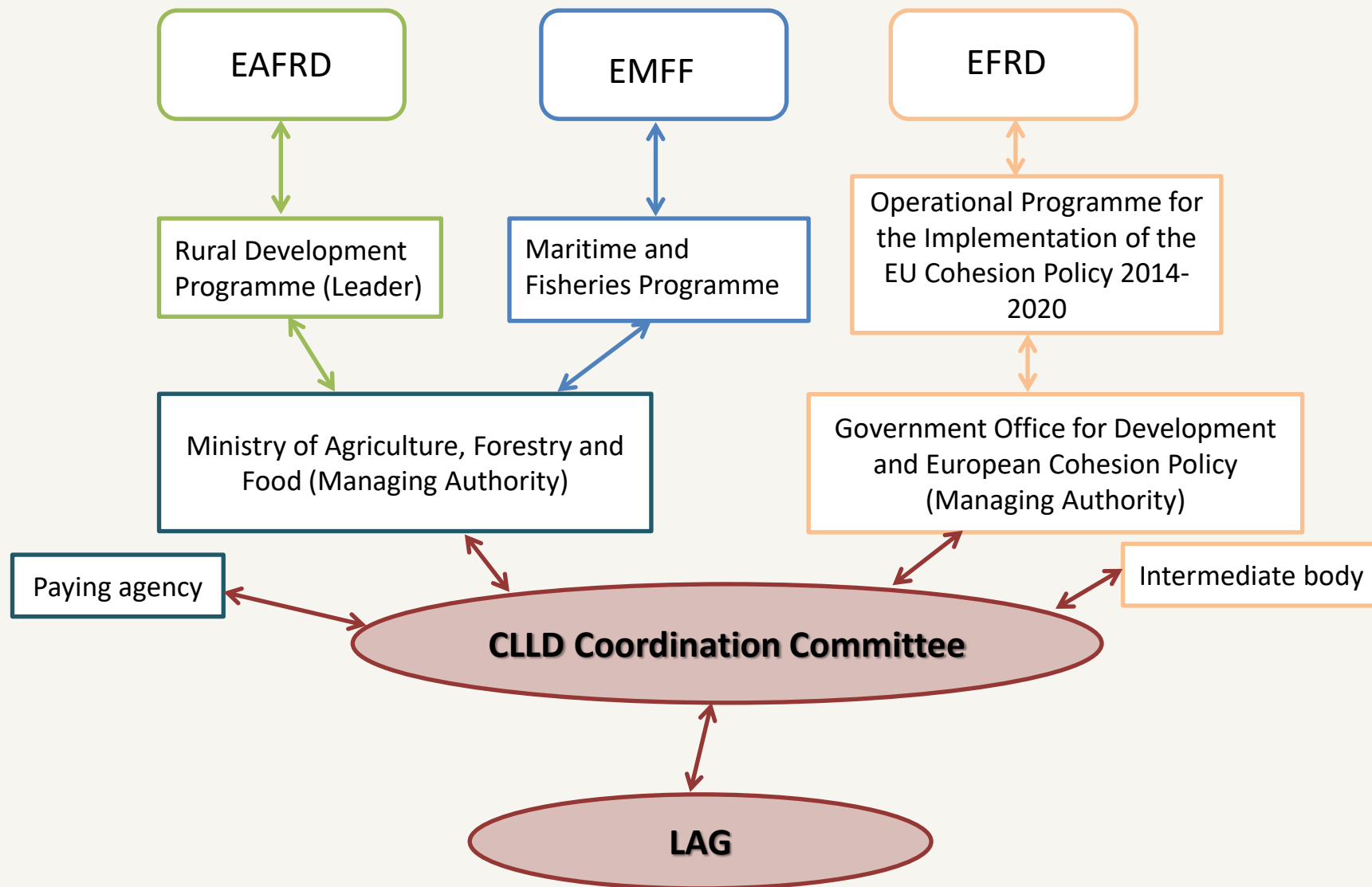
1.400+ projects

Paid 30,7 MIO EUR

(98% of available funds)



LEADER/CLLD 2014-2020



LEADER/CLLD 2014-2020

CLLD Coordination Committee:

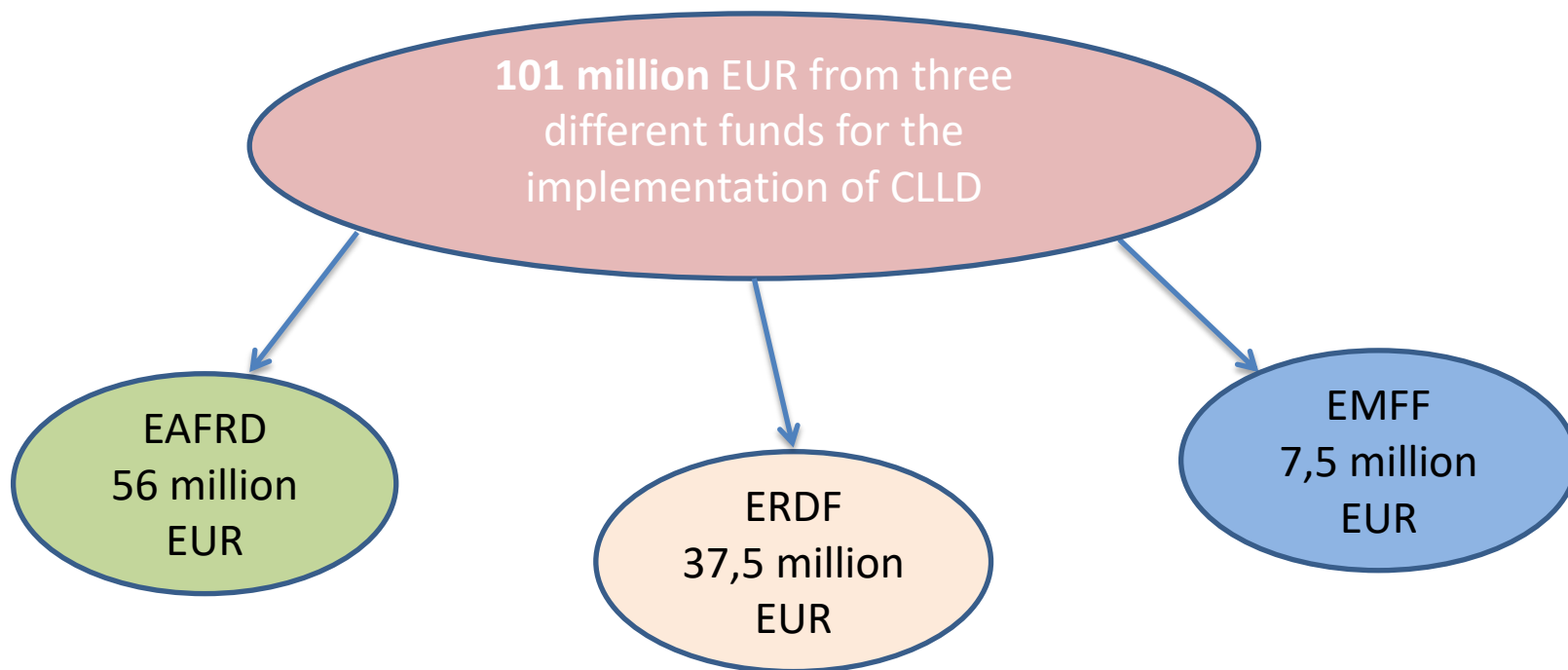
- Representatives of EAFRD MA, ERDF MA, EMFF MA, paying agency, intermediate body
- Headquarters: Ministry of Agriculture, Forestry and Food
- Enables coordination and data exchange between different bodies
- Approval of Local Development Strategies
- communication to LAGs – one door in for LAGs
- Coordination of national regulation:

Decree on the implementation of community-led local development
in the programming period 2014-2020

- Monitoring the LAGs implementation of measure

LEADER/CLLD 2014-2020

LEADER is implemented as a part of **joint CLLD approach** – combination of different financial resources



LOCAL DEVELOPMENT STRATEGY SELECTION AND APPROVAL

Ministry of Agriculture, Forestry and Food (CLLD Coordination Committee) published a call for the selection of LAG and LDS in 2015



Joint selection procedure for all three funds: Selection Committee = members of CLLD Coordination Committee

- 37 LDS selected by 30th October 2016 = all 37 LAGs multi-fund areas :
 - 4 LAGs - EAFRD. ERDF, EMFF
 - 33 LAGs - EAFRD. ERDF

LOCAL ACTION GROUP

Local partnership – organised as a contractual partnership – **tripartite structure** – non of any single interest group represents more than 49 % of the voting rights

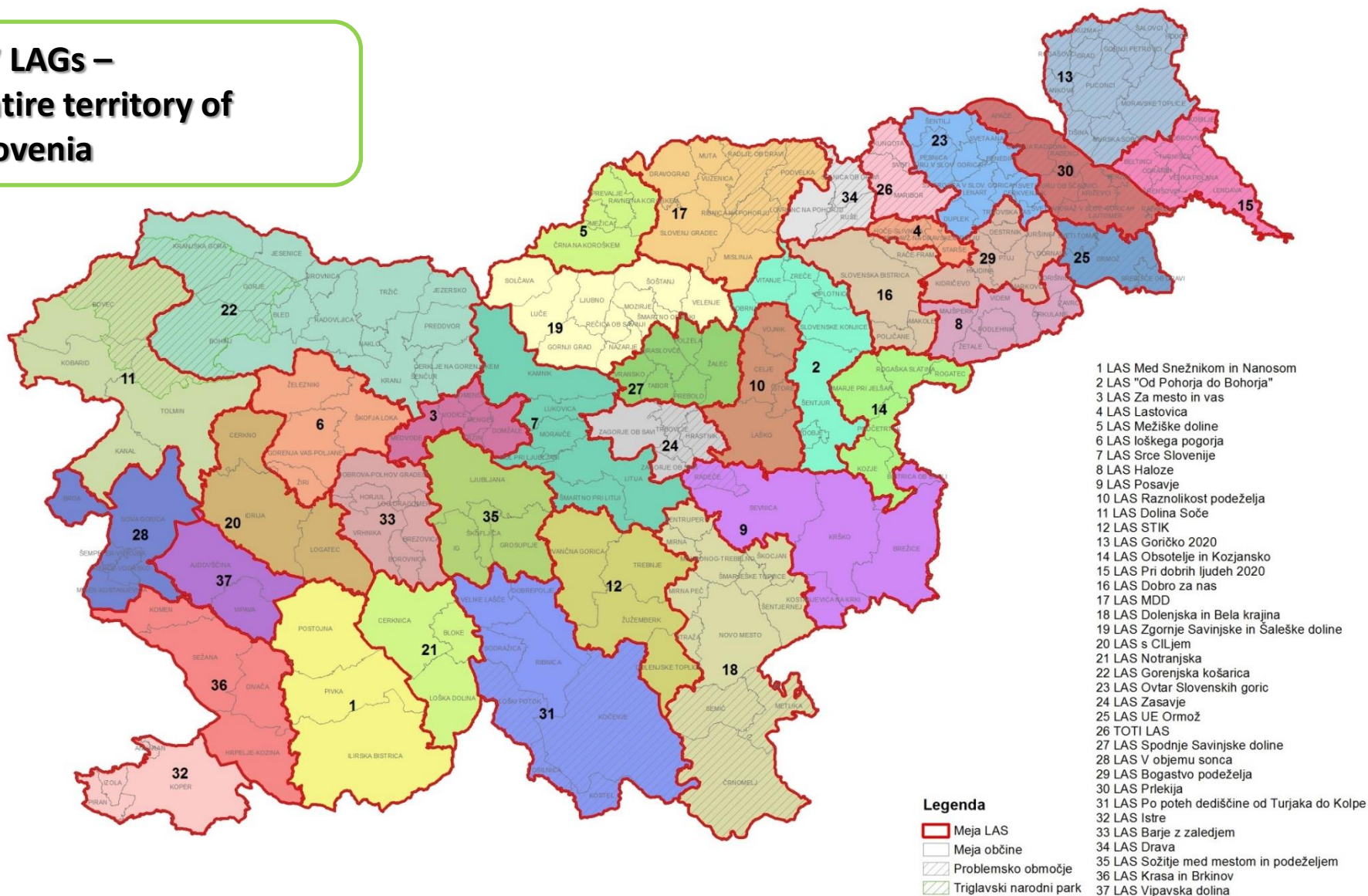
Eligibility criteria for LAG:

- Formed in areas with common local needs and challenges, dealing with special geographical and demographic problems
- A homogeneous geographic and functional area (the area of an individual municipality must not be divided between several LAGs).
- The area has to include between 10.000 and 150.000 inhabitants.
- LAG prepares LDS for entire programming period.
- LAG has to determine the lead partner.



LOCAL ACTION GROUPS 2014-2020

**37 LAGs –
entire territory of
Slovenia**



BUDGET ALLOCATIONS IN LDS

Financial framework for each LAG:

- **EAFRD**: the calculation of the financial framework is based on population data, area of LAGs and development of the municipality
- **EMFF**: additional conditions - number of persons employed in fisheries / aquaculture, number of business entities in fisheries / aquaculture
- **ERDF**: number of urban places within the LAG territory

Financial resources in LDS are allocated for the implementation **four submeasures**:

- **19.1: Preparatory support** – covered by all in the LDS included funds
- **19.2: Implementation of operations** under the CLLD strategy
- **19.3: Preparation and implementation of cooperation activities** of the local action group
- **19.4: Running costs and animation** – covered by the lead fund



PREPARATORY SUPPORT

Purpose of the support:

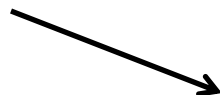
- training local interested parties
- studying the area in question
- activities related to the preparation of an LDS, including the advisory services and activities related to consultations with interested parties
- administrative costs during the preparation of the LDS

Beneficiaries: LAGs which prepared LDS

Flat rate support (funded by all included funds)



20.000 EUR for the confirmed LDS



10.000 EUR for the unconfirmed LDS

RUNNING COSTS AND ANIMATION

Funded by lead fund; unique regulations, SCO's

Purpose of the support:

- Co-financing running costs incurred during the management and operation of LAGs
- Animation of the LAG area and aid to potential beneficiaries for the development of ideas and preparation of operations

Beneficiaries:

LAG

Conditions of eligibility:

costs of animation comprises at least 25%

Amount of support:

LAG may earmark up to 20% of total budget for running cost and animation

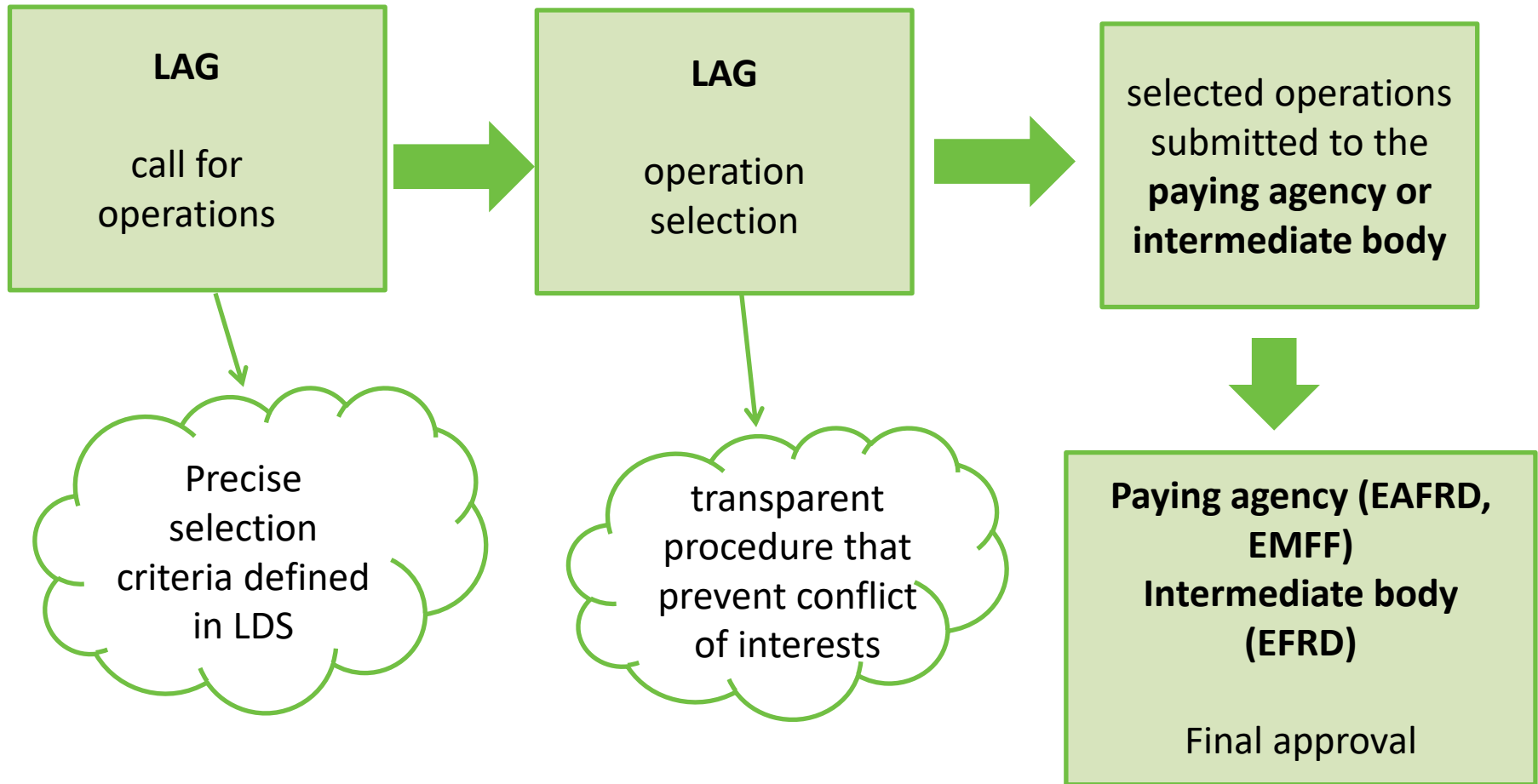
Support rate:

Up to 100% of eligible costs

LAG may claim lower support rate



Submeasure 19.2.: SELECTING OPERATIONS



COOPERATION ACTIVITIES OF THE LOCAL ACTION GROUP/I

Purpose of the support:

Co-finance the costs of LAGs for the implementation of the cooperation activities between LAGs.

Beneficiaries:

LAGs from Slovenia

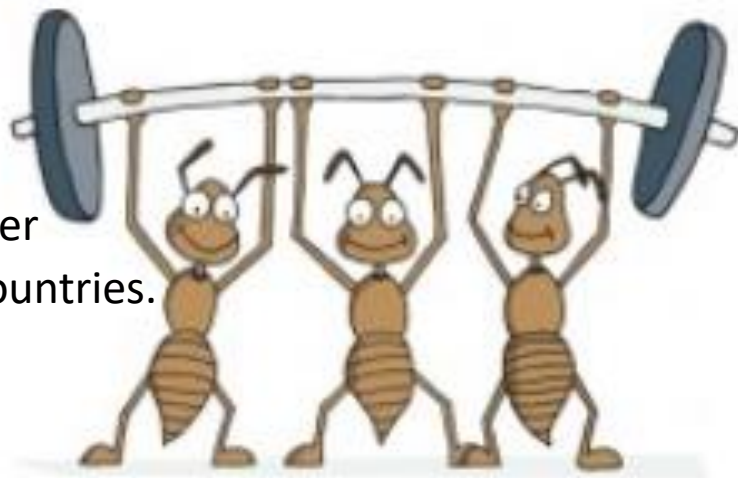
Partners:

LAGs from Slovenia or other EU regions or any other public-private partnership from EU area or third countries.

Support rate

85% of operations eligible costs (ESRDF/EMFF)

80% of operations eligible costs (ERDF)



EMFF/ERDF: cooperation activities included in LDS

COOPERATION ACTIVITIES OF THE LOCAL ACTION GROUP (EAFRD)/II

Amount of support:

7 million EUR for the entire programming period

Lowest amount for support 5.000 EUR

Highest amount of support 100.000 EUR for individual operation per LAG

Individual LAG can submit more than one application

Call for proposal

MA publishes a call for proposal



LAG submits a cooperation operation to PA for approval



PA approves or rejects the application within four months

COOPERATION ACTIVITIES OF THE LOCAL ACTION GROUP (EAFRD)/III

**4 mio
EUR**

4 calls

- from December 2016 until October 2018

- 197 applications
- 74 operations
- almost 4 mio EUR approved

Fifth call in December 2019

- Tendered 3 mio EUR

Possible EAFRD-actions (LEADER)

Broad approach, based on the needs of the local community.

Common examples for LEADER-projects:

- Investments in local heritage association sites
- Cooperations for development of new service solutions
- Bike trails
- Education paths (various themes)
- Tourism development (local level)
- Small investments
- Entrepreneurship and product development



Possible EMFF actions

Broad approach, based on the needs of the local fisheries community.

No investments in vessels, engines etc.

Common examples for EMFF-projects:

- Coastal development (tourism)
- New markets for local fish
- Education for sustainable fisheries
- Diversification of fishery and aquaculture activities
- Maintenance of cultural and natural heritage
- Investments in sustainable fisheries and aquaculture
- etc.



Possible ERDF actions

Broad approach, based on the needs of the local – urban community.

Common examples for ERDF-projects:

- Social inclusion
- Job creation
- Investments in environmental protection
- Greater involvement of vulnerable groups
- etc.



CHALLENGES FOR 2021-2027

- Integrated territorial development - single fund vs. multi-fund approach
- Fully integrated CLLD approach – including ESF
- Simplification of procedures - additionally to SCO methods there is a need to simplify the procedures on all levels
- ???



THANK YOU

clld.mkgp@gov.si

